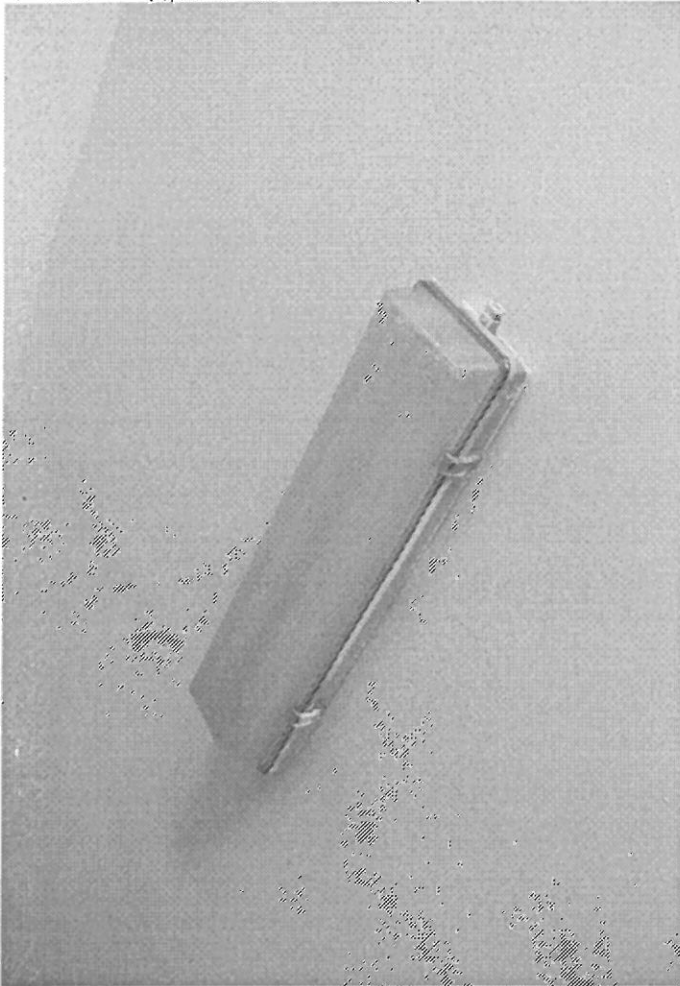
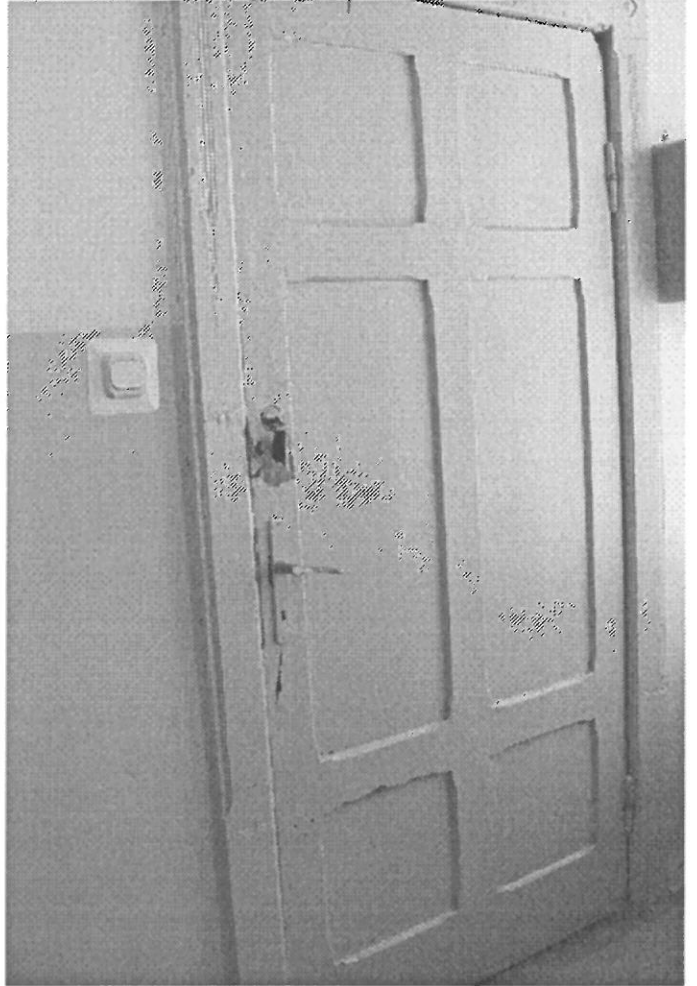


FOT. 1 LAMPA DO WYMIANA



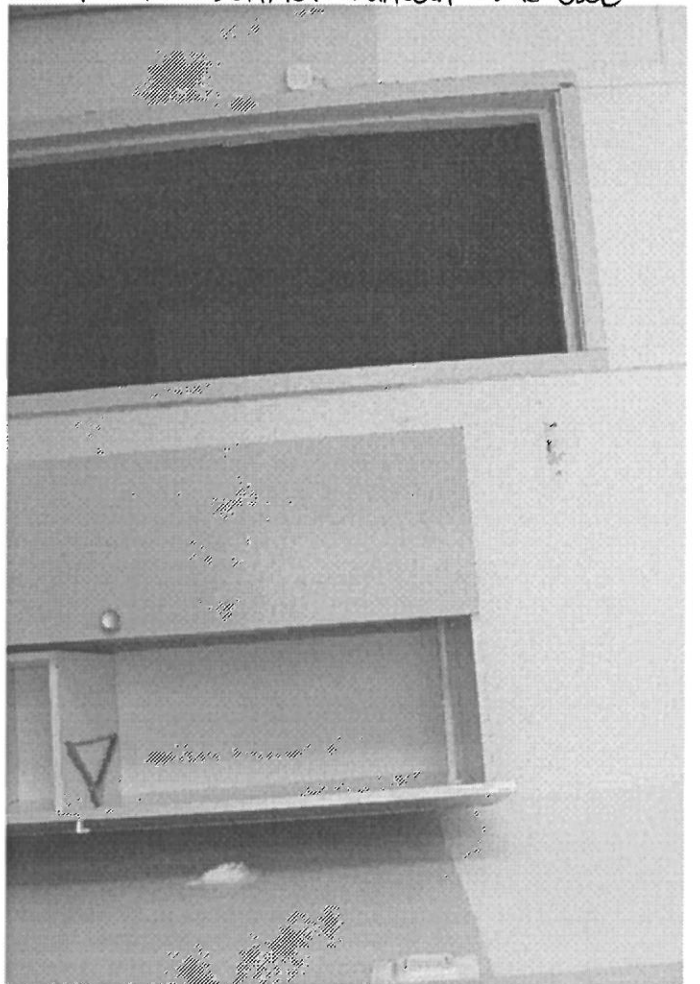
FOT. 2 DRZWI (PIĘTRO) DO BENOWICÓW



FOT. 3 SZKANCA DRZWIOWA DO REZISORKI



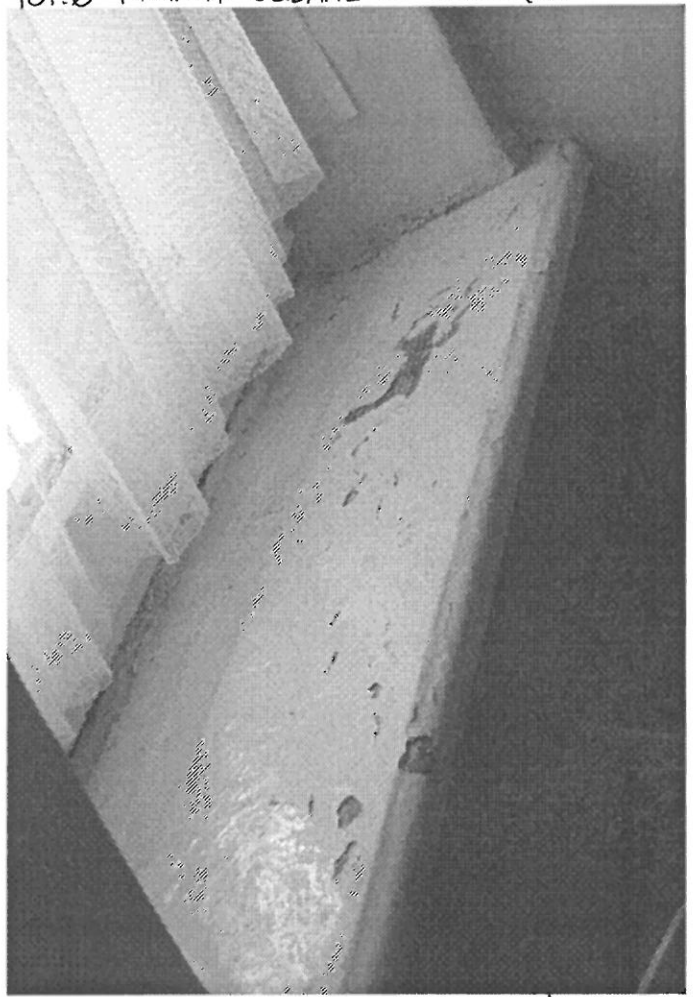
FOT. 4 SZKANCA DRZWIOWA JAK ODDC



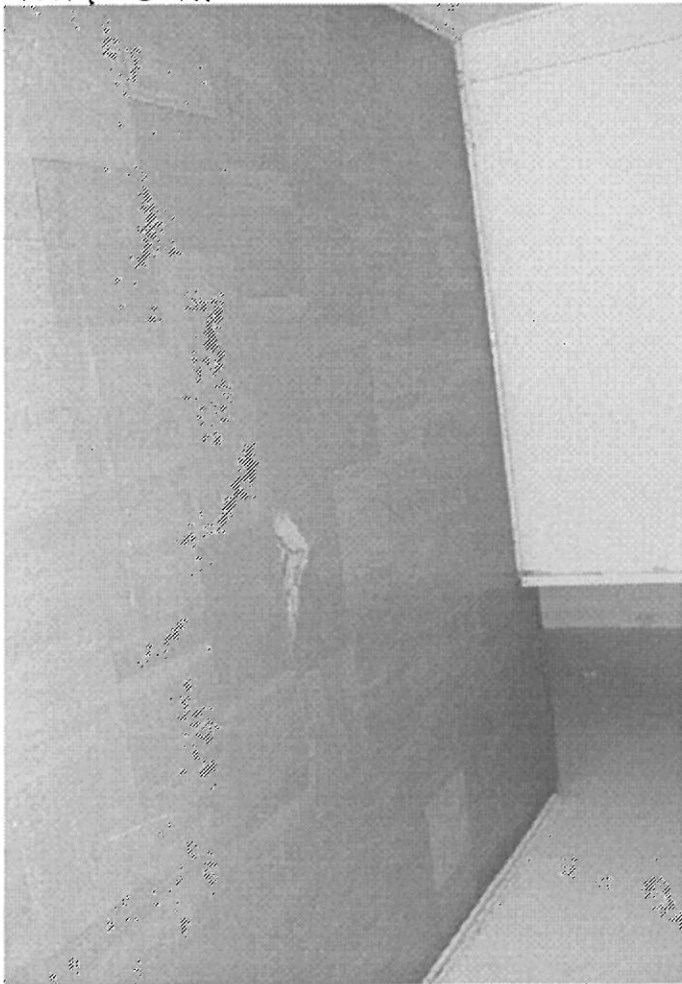
FOT.5 POSADZKA W PRZEDSIENIU NA PIETRZE



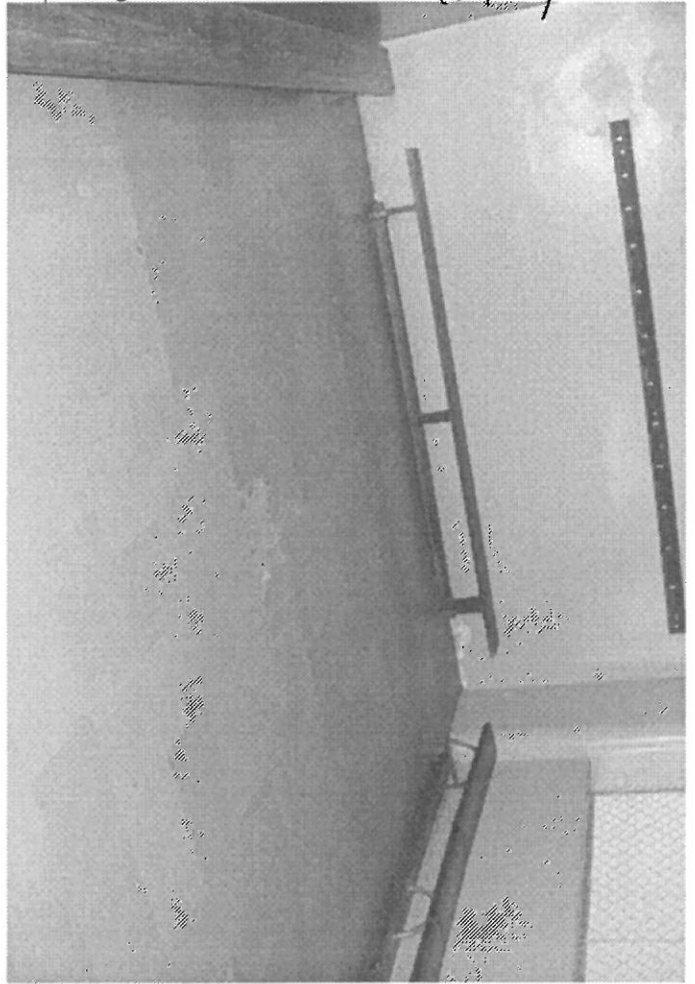
FOT.6 PARAPET OKIENNE DO RENOWACJI



FOT.7 J.W.



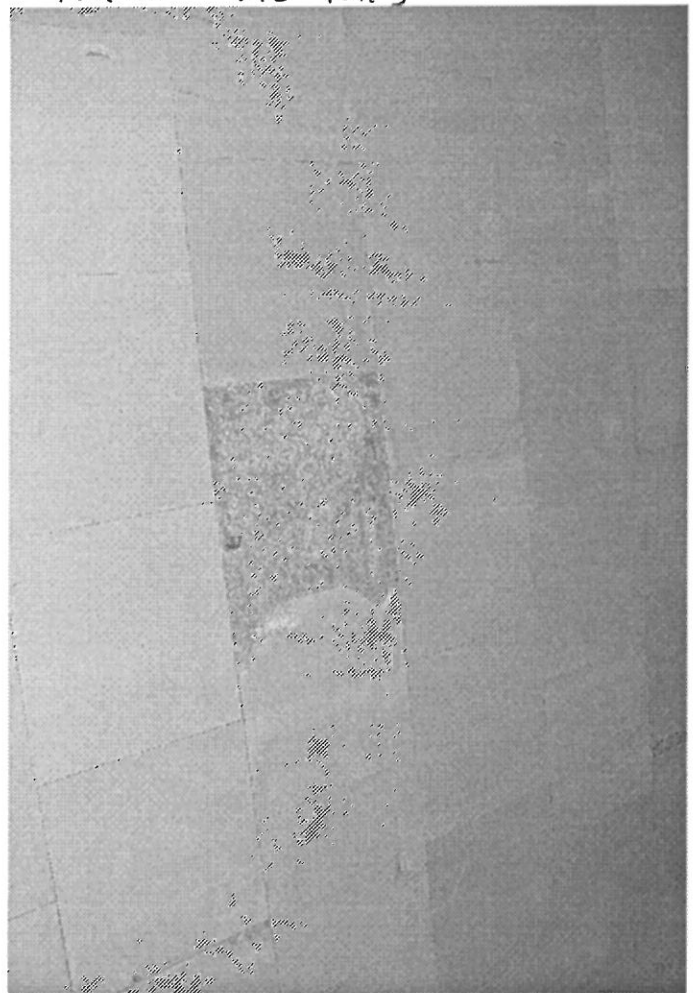
FOT.8 POSADZKA SZATNI (PIĘTRO)



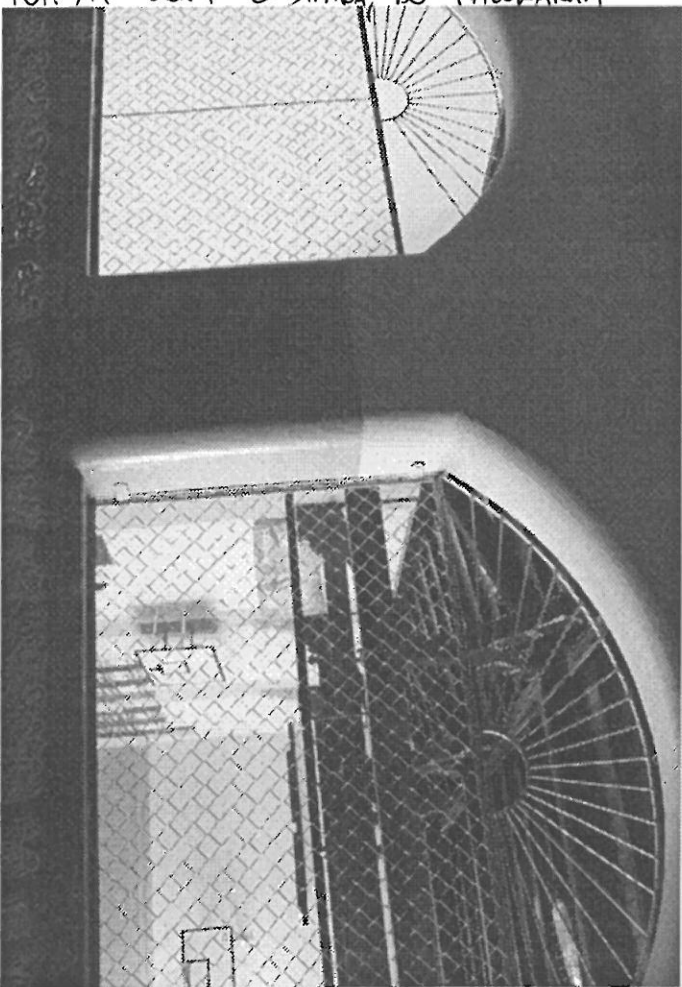
FOT. 9 ROSADZKA SIATKI (PIĘTRO)



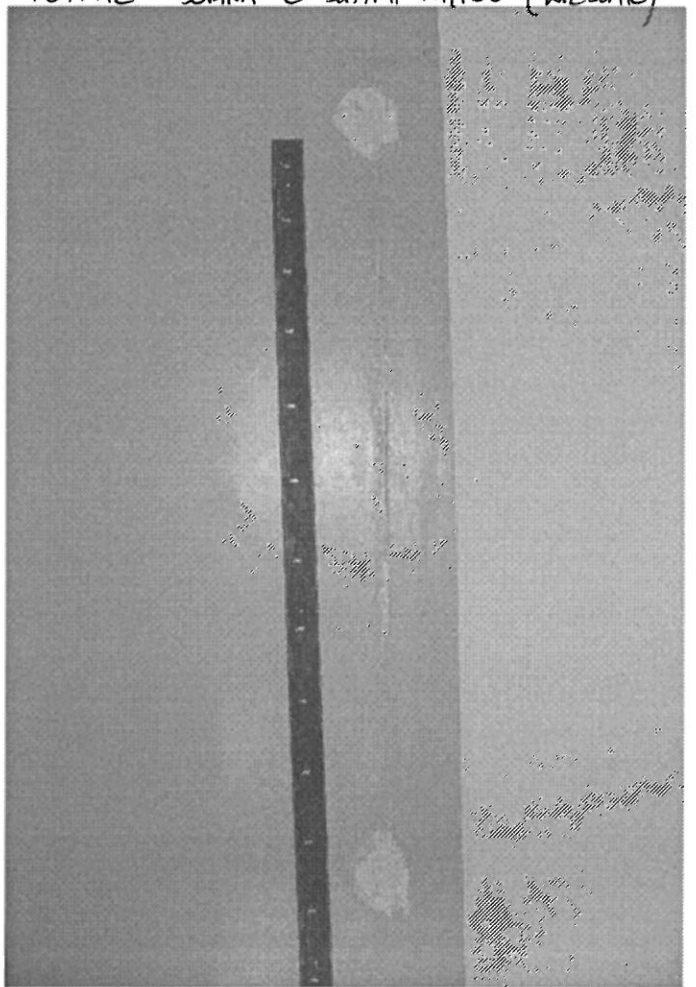
FOT. 10 JAK FOT. 9



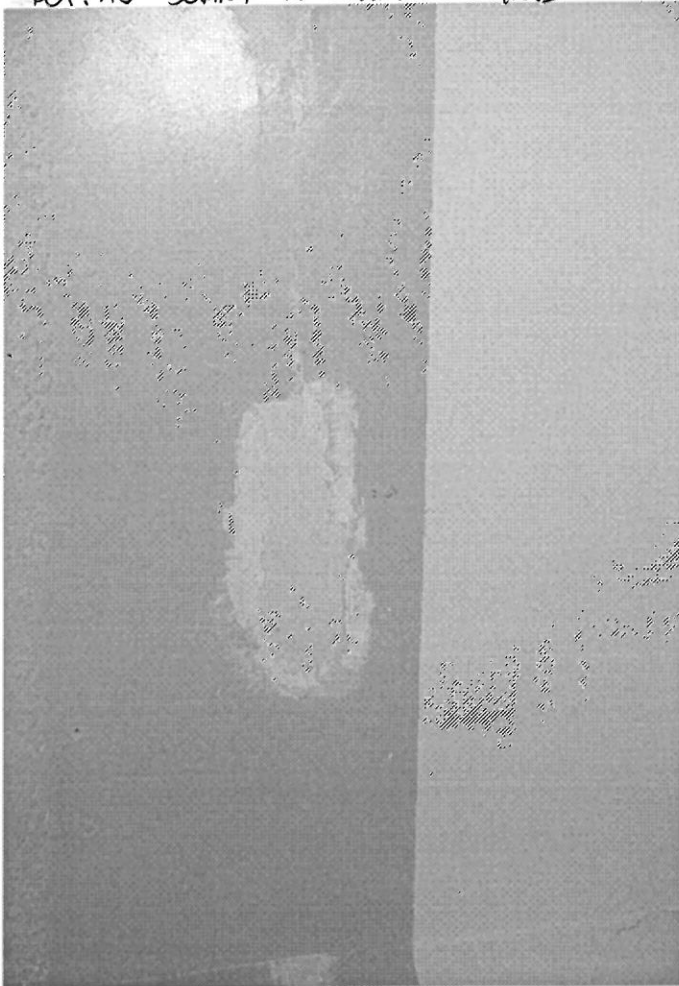
FOT. 11 OKNA Z SIATKA DO MALOWANIA



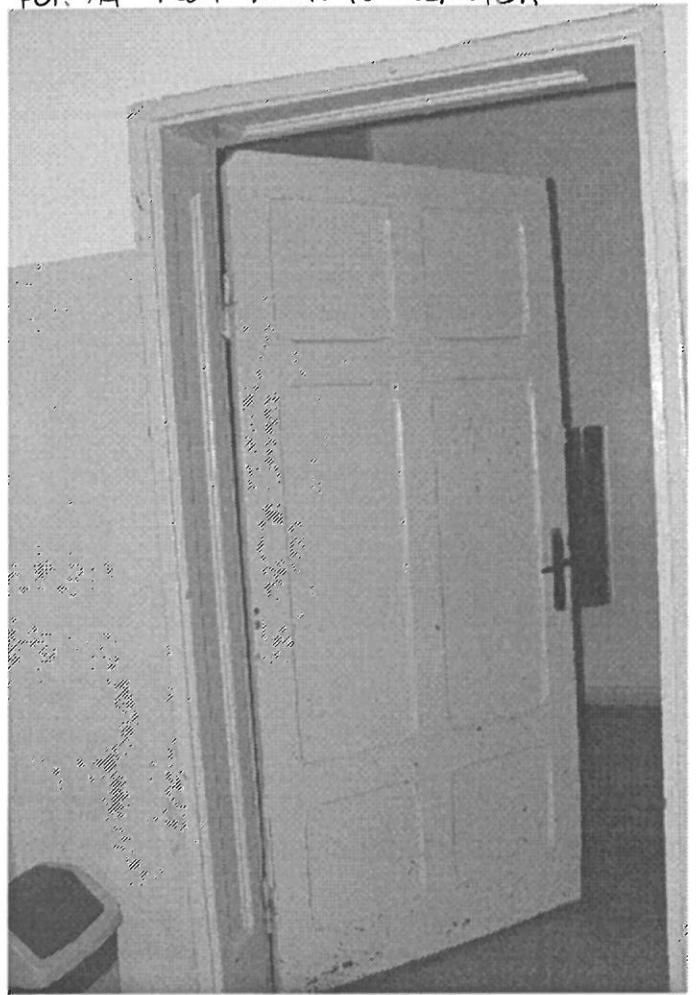
FOT. 12 SCIANA Z SIATKI PIĘTRO (WIEŚCIK)



FOT. 13 ŚCIANA W SYPNI NA PIĘTRZE



FOT. 14 PRZEM. WEJN. DO KUCHNI



FOT. 15 SCHODY DREWNIANE DO KUCHNI



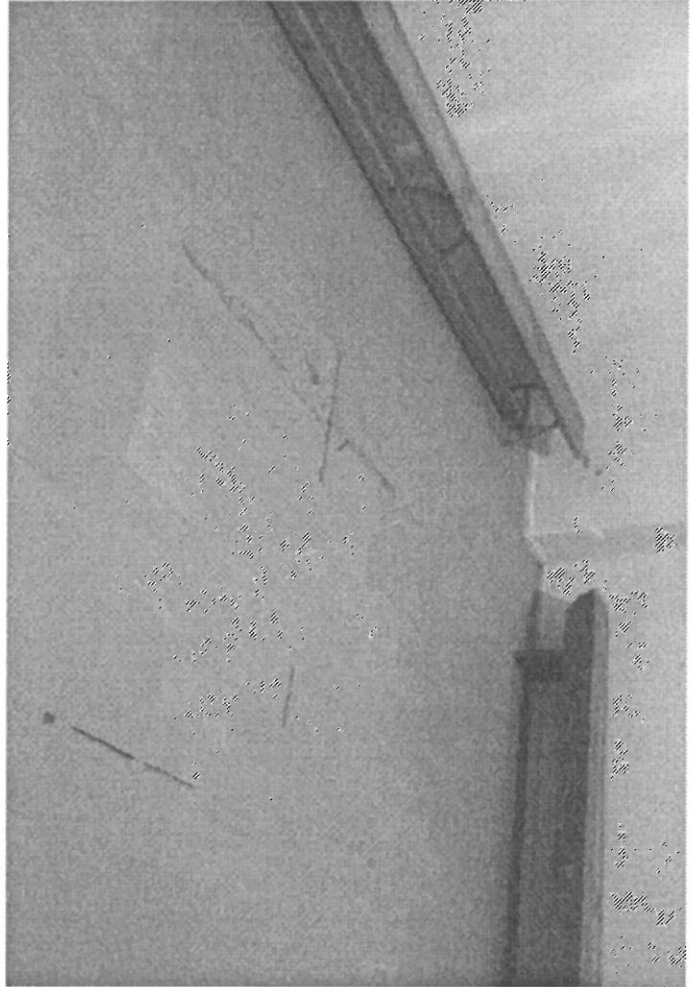
FOT. 16 JAK POK. 15



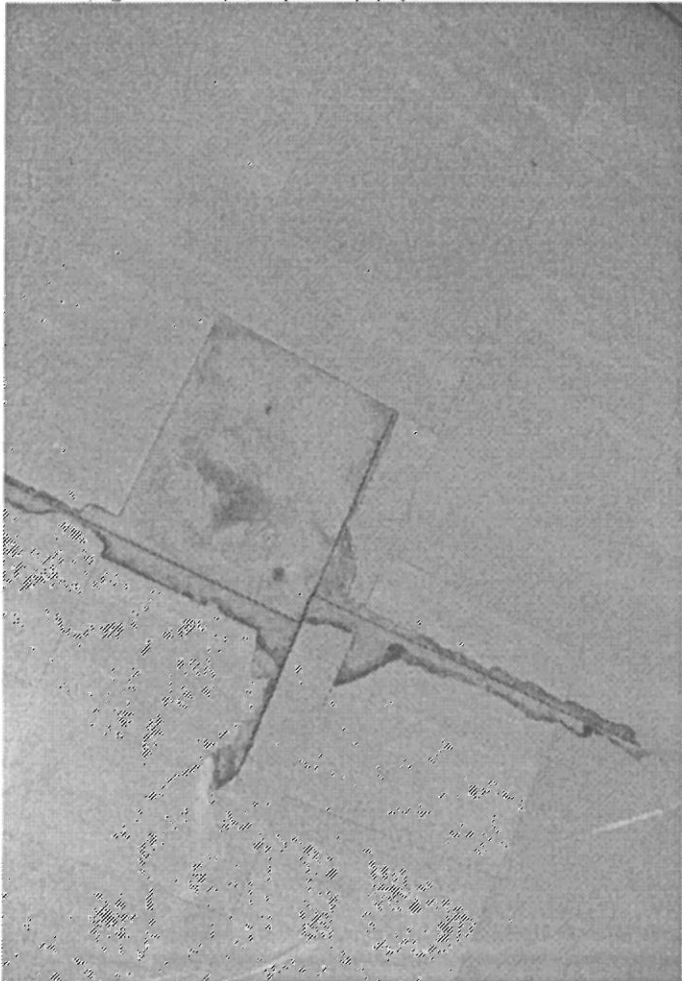
FOT. 17 SCHODY DEBELMANE



FOT. 18 ROSADZKA SZATNIA PATER



FOT. 19 ROSADZKA SZATNIA PATER



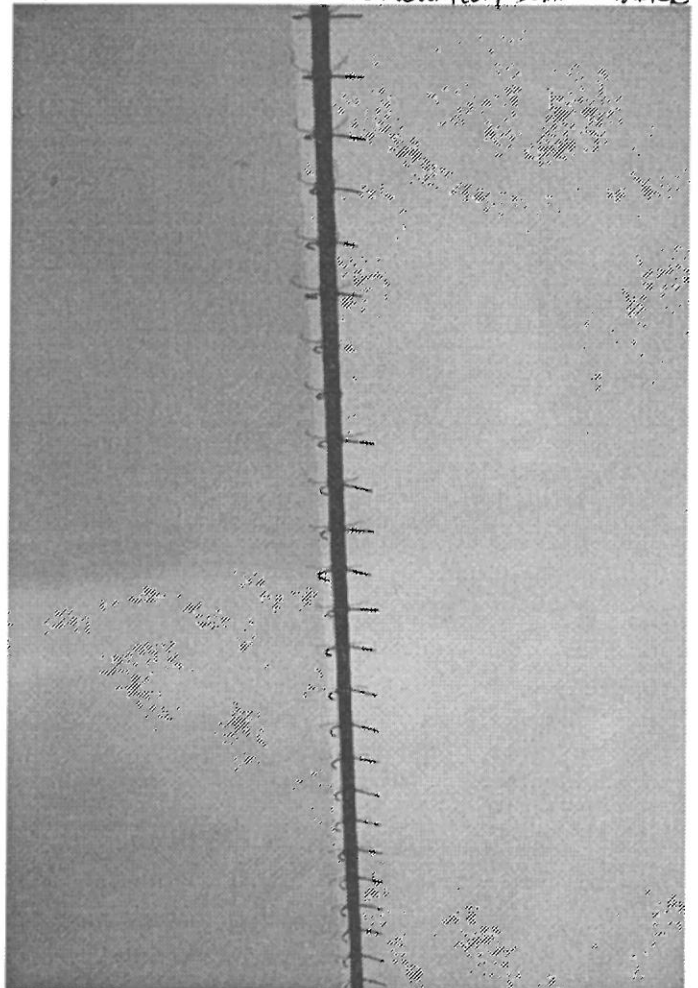
FOT. 20 SZANICA DRZAKOLIA SZATNIA PATER



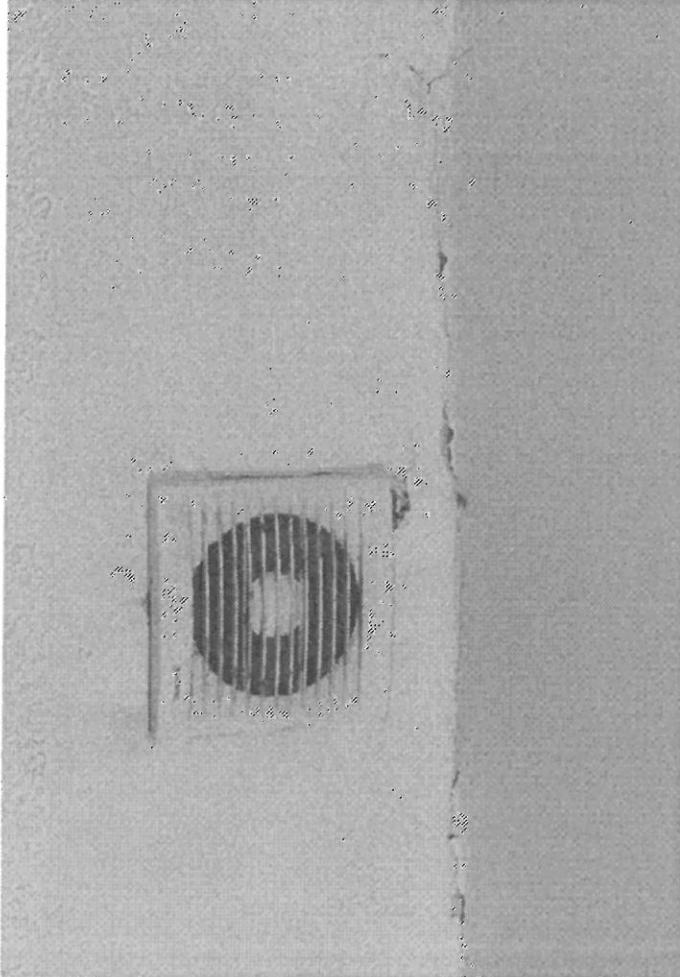
FOT. 21 ŚCIANKA DWUKOŁA SŁATNIA POKOJ



FOT. 22 WIEŚIĄK DO DEMONTAŻU, ŚCIANA POKOJ



FOT. 23 KRATKA WENT. DO ŁAZIENKI (PARKIEC)



FOT. 24 ŚCIANA POKOJ PRZY DO ŁAZIENKI

